

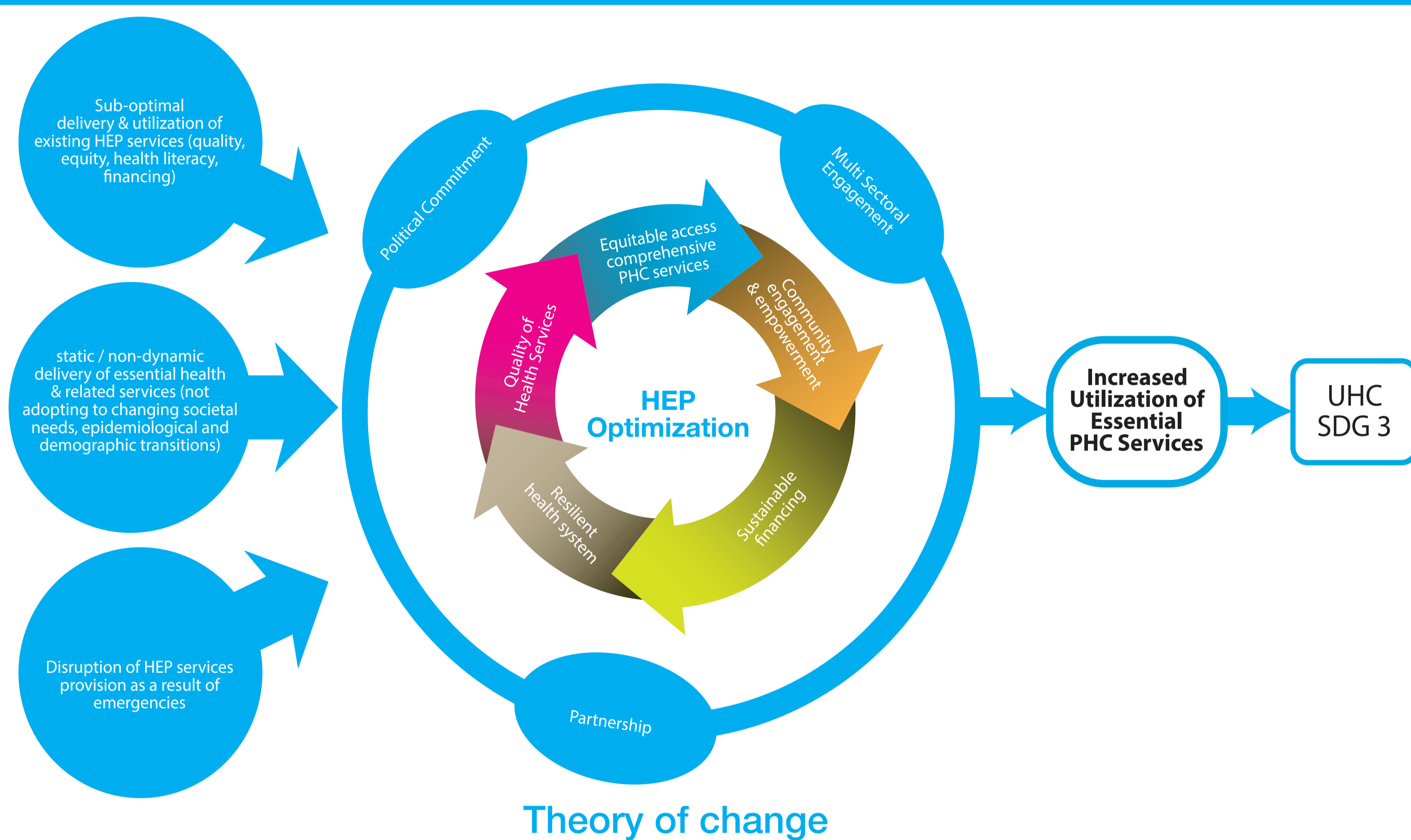
HEP ROADMAP STRATEGIC OBJECTIVES

The HEP optimization roadmap's goal is to accelerate the realization of Universal Health Coverage through which all Ethiopians will have access to needed health services, including prevention, promotion, treatment, rehabilitation and palliative care.

The roadmap intends to serve as a guide for implementing changes to the HEP with the purpose of contributing to this broad goal through six interrelated strategic objectives:



Strengthened and continued political leadership, multi-sectoral engagement and partnerships



MAIN SHIFTS

1. Expand HEP packages and stratify health posts

3. Introduce professional and gender mix among HP staff

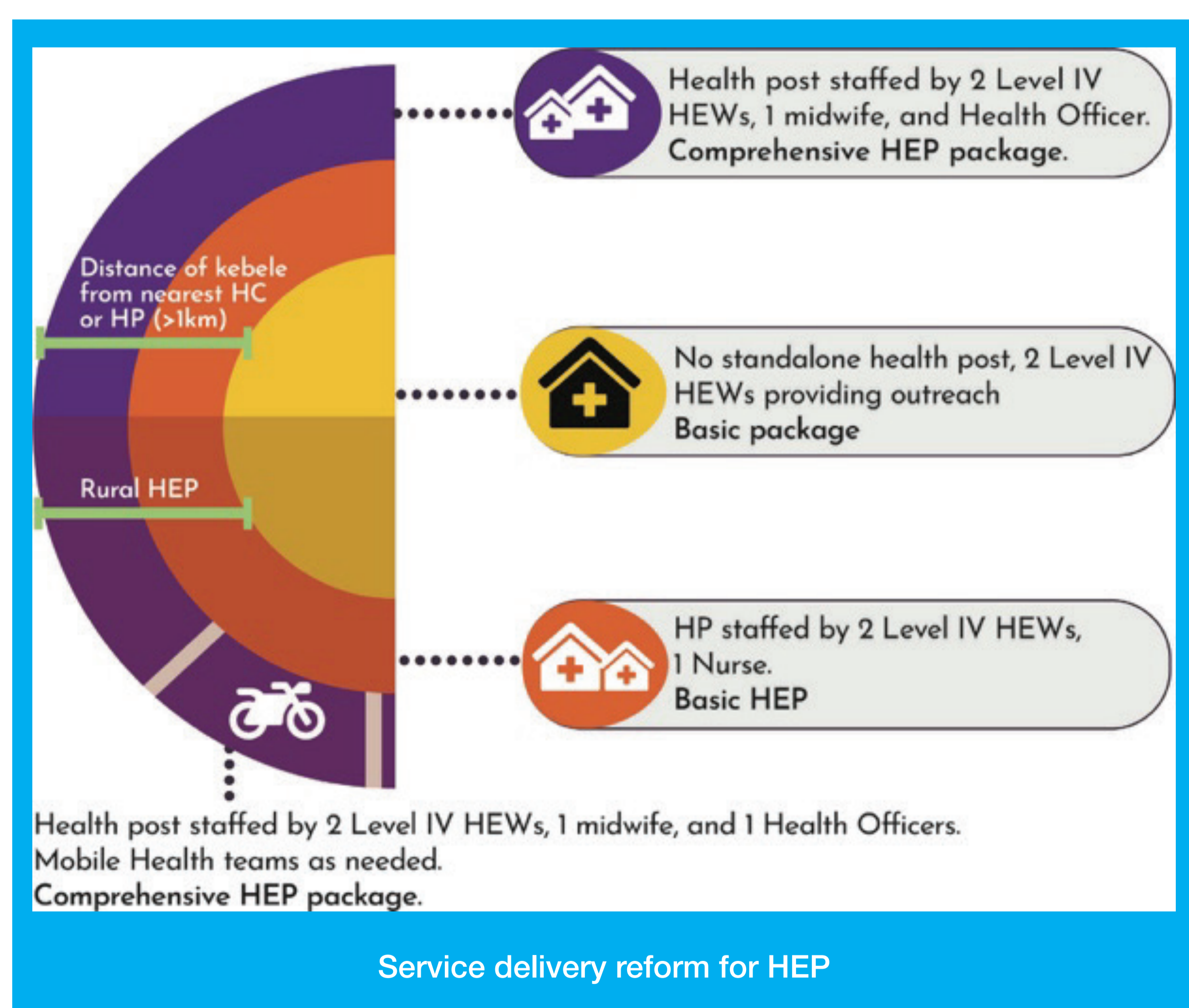
Table 1: Variants of HEP packages

Variants of HEP Packages	Description of contents	Targets
Comprehensive HEP package	<ul style="list-style-type: none"> Comprehensive maternal health care for normal pregnancy, childbirth, and postpartum period Treatment of common childhood illnesses through integrated management of childhood illnesses Treatment of common adulthood illnesses Prevention and treatment refill for chronic illnesses. 	Communities in kebeles that have limited access to a HC or PH (> 1 hour distance)
Basic HEP package	<ul style="list-style-type: none"> Address issues in quality of care Strengthen referral linkages with catchment HC Outreach/mobile health services to communities living far from the HP. 	Communities in kebeles that have access to a HC or PH within 1 hour distance
HEP for communities with access to HC & PH	<ul style="list-style-type: none"> Community-based health promotion Disease prevention Link communities with HC and PH for clinical services. 	Communities in kebeles that already have either a HC or a PH.

Table 2: Description of targets on staffing pattern by year

	DESCRIPTION OF STAFFING PATTERN BY YEAR		
	2025	2030	2035
Basic HPs	2 level 4 HEWs 1 Nurse	1 level 4 HEW 1 Family Health Prof 1 Nurse 1 Environmental Health	2 Family Health Prof 1 Nurse 1 Environmental Health
Comprehensive HPs	2 level 4 HEWs 1 midwife 1 Health Officer	1 level 4 HEW 1 Family Health Prof 1 midwife 1 comprehensive nurse 1 Environmental Health 1 Health Officer	2 Family Health Prof 1 midwife 1 comprehensive nurse 1 Environmental Health 1 Health Officer
HEP unit in HCs - Rural	2 level 4 HEWs	1 level 4 HEW 1 Family Health Prof	2 Family Health Prof
HEP unit in HCs - Urban	2 HEPr	2 HEPr	2 HEPr

2. Restructure service delivery platforms for HEP



THE WAY FORWARD

- ADVOCACY AT ALL LEVELS**
 - Federal
 - Regional
 - Woreda and community
 - Development partners
- CUSTOMIZATION**
 - Contextualization of the roadmap to sub-national levels (considering the different geographic, demographic, social, economic contexts)
 - Preparing implementation manual and guidelines
- COORDINATION PLATFORMS**
 - Strengthening different coordination platforms, at all levels
 - Eliminate duplication of efforts and promote synergy
- RESOURCES MOBILIZATION**
 - From government and external sources
- PILOT TESTING & ADDITIONAL EVIDENCE**
 - Mapping health posts in relation to cluster health centers and stratification
 - New initiatives should be tested on smaller scales before being applied nationally.
 - To determine the feasibility, effectiveness and resource implications to provide the intervention
- PREPARE FOR STRONG M&E**
 - Set baseline for effective M&E
 - Revise M&E for HEP
 - Set new evidence pool
- NEW EVIDENCE POOL**
 - Pooled evidence is needed for decision making (National Census and Programmatic Surveys)
 - Health facility mapping

