

Primary Health Care Resource Center Newsletter

of the International Institute for Primary Health Care - Ethiopia

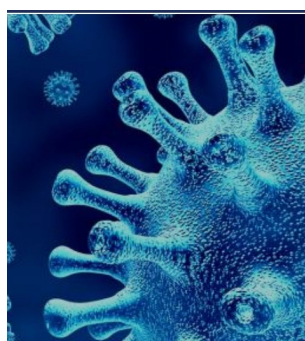


INFORMATION THAT STRENGTHEN PRIMARY HEALTH CARE

Volume 2, Issue 1

June 2020

The Primary Health Care Resource Center



The global pandemic Coronavirus (COVID-19) has been with us for half a year now. The coronavirus continues to be international concern as much remains to be unknown about the virus.

Since the start of the pandemic, IIfPHC-E and its Resource Center has been engaged in compiling and availing useful resources about COVID-19. We are working to support your learning and to connect you to information and courses that may be helpful to you during this difficult time. This newsletter will highlight on some of the COVID-19 resources that have been curated by the Resource Center. We recommend for you to

browse the catalog, eLearning, databases and multi-media webpages so that you keep informed about the pandemic. The resources provide you with updated situation reports, health surveillance, interactive data dashboard, digital tools, articles, case studies, blog posts, graphics, seminars, latest news and much more. Stay informed as we all hope for a treatment, a cure and a vaccine. Good reading!

Community health workers and COVID-19

Community health workers have a vital role to play in fighting the Coronavirus disease. As the virus affects the poor and vulnerable most, concerns grow about how developing countries will cope with densely-populated slums, poor access to water and with social distancing a luxury. Since the virus spreads within com-

munities, many organizations have recognized that CHWs are in a better position to prevent, detect & respond to the disease. Last Mile Health has developed a framework suggesting key roles of CHWs in the prevention, detection and response to the virus. We recommend for you to read LMH's '**Prevent, Detect, Respond: Rapidly**

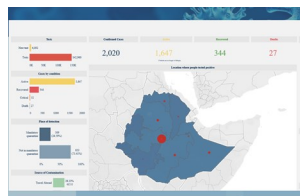
expanding healthcare teams through CHWs in the fight against COVID-19' Also, watch the **video** from CDC that support evidence on the roles of CHWs as first responders in the pandemic. These health workers are united to help learn more and mitigate the disease. However, there are not enough of them world-wide to fight Coronavirus.

Special points of interest:

- COMMUNITY HEALTH WORKERS AND COVID-19
- FREE ONLINE COURSES ON COVID-19
- RESOURCES ON THE CORONAVIRUS

Inside this issue:

ETHIOPIA DURING COVID-19	2
COVID-19 IN AFRICA	2
INTERNATIONAL RESPONSE TO COVID-19	2
FREE ONLINE COURSES ON COVID-19	3
ADDITIONAL RESOURCES ON THE PANDEMIC	3
SHARE YOUR RESOURCES	4
IIfPHC-E RESOURCE CENTER IS ON THE WEB	4



COVID-19 Ethiopia case tracker dashboard

Ethiopia during COVID-19

Ethiopia reported the first coronavirus case on March 13. Since then, preventive measures including closure of all schools and places of worship, social distancing and wearing masks in public places, have been undertaken. With a population of over 100 million, these measures have not been seriously followed by the public and imposed public

health challenges. To reduce the spread of the virus in rural communities, Ethiopia has turned to its health extension workers, who formed the foundation of its primary health system. These rural health workers have been supported and protected by the Government. They are retrained to educate communities and debunk myths about the virus, to identify people with

symptoms, and to conduct contact tracing in their villages. Currently, the health of the nation lies in the hands of the health extension workers. For latest updates on the coronavirus, visit Ministry of Health's [COVID-19 Ethiopia case tracker dashboard](#). For the Amharic version, visit [Covid19.et](#)

Coronavirus in Africa

The Coronavirus disease continues to rise in Africa, with the majority of African countries officially reporting the case. The Region may struggle to control the virus, given their weak and overburdened health care systems. To explore lessons learnt from previous epidemics, the challenges on the disease, combat-

ing myths, best practices to prevention and care and the impact of the virus on other health services, follow [Africa's Health care Response to COVID-19 Webinar Series](#). For latest updates and map of COVID-19 in Africa, follow the [Africa CDC Dashboard](#). Also check out the lecture series by Johns Hopkins

University Center for Global Health on 'Strategies to Support the COVID-19 Response in LMICs: A Virtual Seminar Series' for a series of short lectures on key topic areas. Each lecture provides link to recording, presentation material and resources to help you prepare for the outbreak within your institution.



International response to COVID-19

The international community is deeply concerned about the coronavirus and its spread in 213 countries. The world needs to come together to address public health needs, share data and research, provide universally accessible health

services and ultimately mitigate the global impact of corona. [Our World in Data](#) provides statistics and research for 207 country profiles on the virus. Each country's profile include: deaths, tests, cases and government response, which are updated

daily. The website has interactive visualizations and metrics as well as data explorer that is downloadable. Also visit Worldometer's [COVID-19 data](#). Worldometer analyzes, validates & aggregates data from different sources and provides live statistics.

Free online courses on COVID-19

WHO's ['Responding to COVID-19'](#) provides free, real-time training for the coronavirus disease outbreak in multiple languages.

WHO Academy [COVID-19 App](#) is targeted to health workers who face the challenge of keeping up with the latest information related to COVID-19. The App delivers mobile access to knowledge resources including up-to-the-minute guidance, tools, training, and virtual workshops to support and protect health workers.

A free ['Community Health Worker COVID-19 eTraining module'](#), developed by MCD Public Health, covers crucial topics for community health workers, including their roles, communication with their communities, connecting patients, managing stress, protecting themselves and more.

For a course on contact tracing, visit ['COVID-19 contact tracing'](#), which is developed by Hopkins University. The course offers the basics of the virus, contact tracing key skills, challenges and

possible strategies to overcome them. Further, visit ['COVID-19 Contact Tracing Training: Guidance, Resources and Sample Training Plan'](#). This course is designed by CDC and helps to conduct case investigation or supervision based on established protocols.

For additional courses on COVID-19, visit the [eLearning Resources](#) of the IfPHC-E Resource Center. You may also join online forums to discuss Coronavirus issues and share resources.



Additional resources on the pandemic

The IfPHC-E Resource Center has put together a wide range of e-resources on the coronavirus disease that have been shared and compiled by the global health community, including health organizations, academic institutions and the private sector. The resources offer multi-disciplinary information on the COVID-19 pandemic. The Resource Center has organized these resources for ease of reference.

Visit the [Multimedia on COVID-19](#) for latest news, visual data analysis, interactive maps, videos and live events.

You may also visit the Resource Center's [Health databases](#) for access to e-resources available to support your participation in responding to the pandemic. You could learn more about the disease, its transmission, public health principles and challenges, and much more.

Visit the [Catalog](#) for latest e-journal article and reference material links including COVID-19 explainers, academic evidence, technical guidance, policies and more.

All the resources will help you for rapid learning, strengthening health systems, supporting health workers, and advocating for efforts and mechanisms to tackle COVID-19.





IIFPHC-E

Information that strengthen primary health care

IIFPHC-E



The Federal Ministry of Health, recognizing the importance of primary health care, established the International Institute for Primary Health Care - Ethiopia (IIFPHC-E) in 2016. The Institute is founded to contribute to and play a key role towards the development of a structured, proactive, flexible, problem-solving, and resilient PHC system. IIFPHC-E facilitates capacity building on operational, programmatic and managerial levels, including carrying out PHC systems implementation research and disseminating lessons learned by developing a variety of communication platforms both with Ethiopian and international mandates. The Institute facilitates the sharing of Ethiopia's successful Health Extension Program with low & middle-income countries interested in the establishment of grass-roots health systems. Also, the Institute works towards the institutionalization of robust PHC movements in the African Region as a post Astana conference action.

We're on the web:

<http://iifphc.org/iifphc-resource-center/>

Share your resources

The IIFPHC-E Resource Center has developed a resource sharing policy and interlibrary loan policy to facilitate the sharing of resources among partner health organizations. Resource sharing is founded on the principles of reciprocal access, interdependence, equitable access and efficiency. We invite you to participate in this resource sharing arrangement. Please contact us at: resourcecenter@iifphc.org

IIFPHC-E Resource Center is on the web

Although the lockdown has impacted the onsite service of the Resource Center, we worked remotely to support your information needs. The website resources are updated and are available to you online to help you learn more about the coronavirus disease during this pandemic era.

IIFPHC-E Resource Center
Gullele sub-city
Woreda 9, House #626
Ethiopian Public Health
Institute (EPHI)
National Training Center
Addis Ababa, Ethiopia
2nd Floor
+251 118-279947 |
resourcecenter@iifphc.org

